



# 2023 IMPACT REPORT

In 1968, St. Francis Children's Center started with one belief...the earlier children with special needs received assistance, the more opportunities there would be for them to achieve success. Since then, we've provided education, therapy and, support services to over 35,000 kids of all abilities allowing them to reach their goals.

**Our Mission:** *To serve and educate children with special needs in inclusive environments enabling them to reach their greatest potential.*



## 1300

total children served  
in 2023

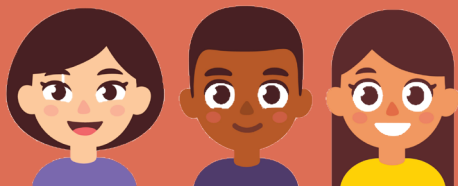


## 46%

were living in homes at or below  
the poverty level

## 86%

had special needs or  
developmental delays

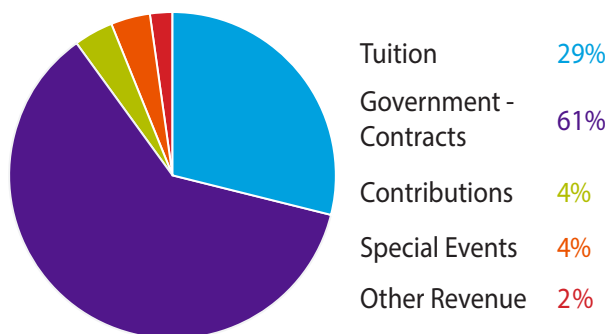


## 58%

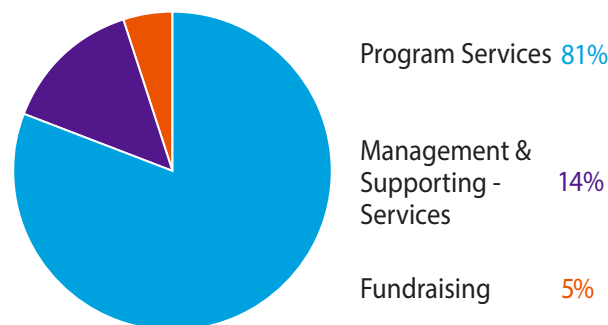
were from  
diverse racial  
or ethnic groups

## 2023 Financials

### REVENUE 2023



### EXPENSES 2023



The financial statements of St. Francis Children's Center are audited by the accounting firm of RitzHolman CPAs. For a complete audited financial statement, visit [sfckids.org](http://sfckids.org).

# Our Programs



## Early Childhood Education

St. Francis Children's Center's Early Childhood Education Program serves children, with and without special needs, from six weeks through Kindergarten. All classrooms are fully-inclusive to ensure that children of all backgrounds and abilities have the opportunity to grow, play and learn together. Highly qualified teachers and support staff in our year-round classrooms develop curriculum to meet the individual needs of each child and maximize his or her early brain development through play-based learning.

## Family Activity Center

Our Family Activity Center (FAC) offers free and low-cost programs, drop-in play times, activities and special events for ALL families in our community who have a child with special needs. The program was created to help reduce feelings of loneliness and isolation that these families may be experiencing while raising a child with a disability or delay. Our FAC provides a space for parents and caregivers to come together, share resources and network with others.

## Children's Long-Term Support Program

Milwaukee County's Children's Long-Term Support (CLTS) Waiver Program at SFCC serves children with severe, long-term developmental, physical, emotional or sensory impairments up to age 22. The program is designed to provide support and service coordination for kids with special needs and their families. Once a child is assigned to SFCC for Waiver services, our team develops an Individual Service Plan, with unique goals and objectives for the child.

## Early Intervention/ Birth to Three

Milwaukee County's Birth to Three Program at SFCC provides early intervention services for children under age three who have developmental delays or disabilities and support to their families. Services offered to families may include: special education; speech, physical and occupational therapies; psychological therapy; family education and training; and service coordination.



### Please Help Support SFCC Programs & Families

#### Donate Online:

Visit [www.sfcckids.org](http://www.sfcckids.org) and click *DONATE* button.

#### Mail a Check:

Send your donation to our office -  
6700 N Port Washington Rd., Milwaukee, WI 53217

**THANK YOU!**



6700 N. Port Washington Road  
Milwaukee, WI 53217

**414-351-0450**

**[www.sfcckids.org](http://www.sfcckids.org)**